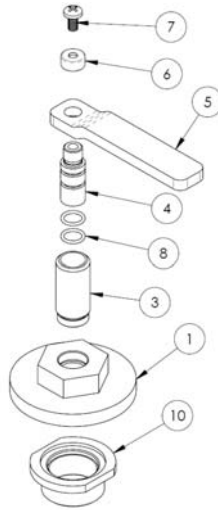
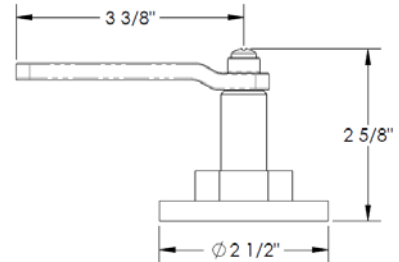


HANDLE TRIMS

Elan (Code: EV4)



ITEM NO.	PART NUMBER	QTY.
1	EV4-ESC-RING	1
3	EV4-STEM	1
4	EV4-BRCH-SLVE	1
5	EV4-LVR	1
6	EV4-POST-CAP	1
7	CR-PHMS 0.19-32x0.375x0.375-S	1
8	AS568 - 012	2
10	L4-TOP-LOCK-NUT	1



Specification from Finished Wall to Tip of Broach Stem

HANDLE TRIM #	MEASUREMENT (IN.)
EV4	1 7/8

Note: When fitting handle it may be necessary to shorten broach stem and/or threaded nipple to eliminate gap between handle and escutcheon

IMPORTANT INSTALLATION INFORMATION

- USE TEFLON TAPE OR PIPE SEALANT FOR THREADED CONNECTIONS
- DO NOT USE PLUMBER'S PUTTY ON ANY OF THE BRASS COMPONENTS
This will cause the finish to tarnish and void the warranty. A non-corrosive Alkoxy Silicone is recommended.
- DURING SWEATING OF LINES DO NOT OVERHEAT CASTING
Overheating may cause damage to internal mechanism
- COPPER ADAPTORS MAY BE REQUIRED TO COMPLETE YOUR INSTALLATION

For technical support, please call 718-257-2800